



## Pentalift ProAir Lift Tables

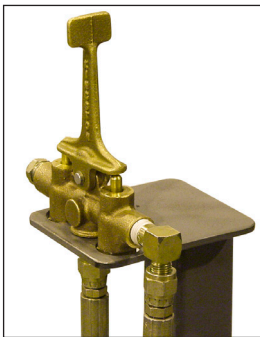
A complete line of high quality pneumatic lifting and positioning equipment



Engineered for Safety

# Pentalift ProAir pneumatic air lift, rotate, and tilt tables

Pentalift Equipment Corporation manufactures the highest quality lifting and positioning equipment in the industry. The Pentalift ProAir line of pneumatic lift, rotate and tilt tables help to create a safe and efficient workplace which increases productivity and reduces the potential of cumulative trauma disorders. Pentalift ProAir pneumatic lifts are easy to install. The complete line of equipment operates utilizing the facilities air supply. The heavy duty construction of the lift tables is consistent with the reputation that Pentalift has earned for high quality designs and durability through out its full line of lift and positioning equipment. Built to last.



Control valve: c/w muffer on pedestal (standard)



## ProAir lift and tilt tables

Featuring both lift and tilt offers the ideal solution for raising and tilting containers into the most productive and ergonomically correct position. Heavy duty retaining bar eliminates potential "tangling" associated with retaining chain design.



Model#	Capacity (lb.)	Travel (in.)	Tilter Platform Size W x L (in.)		Lower Frame Size W x L (in.)
			Min.	Max.	
Tray Thrust Lift & Tilt Tables (Shown)					
PALT2-2548	2,000	24	30 x 48	50 x 60	25 x 48
PALT2-3648			36 x 48	60 x 60	36 x 48
PALT2-4248			42 x 48	66 x 60	42 x 48
PALT4-2548	4,000	24	30 x 48	50 x 60	25 x 48
PALT4-3648			36 x 48	60 x 60	36 x 48
PALT4-4248			42 x 48	66 x 60	42 x 48
PALT6-4248	6,000	24	42 x 48	66 x 60	42 x 48
Floor Thrust Lift & Tilt Tables (Not Shown)					
PAFT2-2548	2,000	24	30 x 48	50 x 60	25 x 48
PAFT2-3948			39 x 48	60 x 60	39 x 48
PAFT4-3948	4,000	24	39 x 48	60 x 60	39 x 48

Note: All Models have a 16" lowered height.

# ProAir lift and rotate tables

Designed to raise, lower and rotate product into a comfortable working position. Rotation permits load / off load at the position closest to the operator. This feature reduces reaching and lifting / lowering at an awkward, extended position.

Model#	Capacity (lb.)	Low Height (in.)	Travel (in.)	Rotator Platform Size W x L (in.)		Lower Frame Size W x L (in.)
				Min.	Max.	
Tray Thrust Lift & Rotate Tables (Shown)						
PALR2-2548	2,000	11 <sup>7</sup> / <sub>16</sub>	24	25 x 48	48 x 54	25 x 48
PALR2-3648				36 x 48	56 x 60	36 x 48
PALR2-4248				42 x 48	62 x 70	42 x 48
PALR4-2548	4,000	11 <sup>7</sup> / <sub>16</sub>	24	25 x 48	48 x 54	25 x 48
PALR4-3648				36 x 48	56 x 60	36 x 48
PALR4-4248				42 x 48	62 x 70	42 x 48
PALR6-4248	6,000	11 <sup>7</sup> / <sub>16</sub>	24	42 x 48	62 x 70	42 x 48



## ProAir tilt tables

Typically used to tilt containers into an ideal position for comfortable part placement or removal. Wide range of floor stand heights available. Heavy duty tilt retaining bar eliminates potential "tangling" associated with retaining chain design.

Model#	Capacity (lb.)	Tilt Angle	Low Height (in.)	Platform Size W x L (in.)		Lower Frame Size W x L (in.)
				Min.	Max.	
<b>PAT2</b>	2,000	30° or 40°	7	30 x 36	50 x 54	25 x 36
				48 x 44	66 x 54	42 x 36
<b>PAT4</b>	4,000	30° or 40°	7	30 x 36	50 x 54	25 x 36
				48 x 44	66 x 54	42 x 36
<b>PAT6</b>	6,000	30° or 40°	7	48 x 44	66 x 54	42 x 36



## ProAir lift tables

Ideally suited for raising or lowering product into the most ergonomically correct position. Ergonomically correct positioning increases productivity and reduces the risk of injury to the operator.

Model#	Capacity (lb.)	Low Height (in.)	Travel (in.)	Raised Height (in.)	Platform Size W x L (in.)		Lower Frame Size W x L (in.)
					Min.	Max.	
Tray Thrust Lift Tables (Shown)							
PAL2-2548	2,000	9	24	33	25 x 48	48 x 72	25 x 48
PAL2-3648					36 x 48	60 x 72	36 x 48
PAL2-4248					42 x 48	66 x 72	42 x 48
PAL4-2548	4,000	9	24	33	25 x 48	48 x 72	25 x 48
PAL4-3648					36 x 48	60 x 72	36 x 48
PAL4-4248					42 x 48	66 x 72	42 x 48
PAL6-4248	6,000	9	24	33	42 x 48	66 x 72	42 x 48





# Options



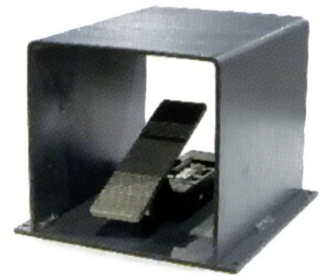
Tilt stabilizer



Accordion bellows: Minimize debris entry

## Other options (not shown)

Portability package  
Stainless steel  
Bevel toe guards for pit mounting



Guarded foot pedal control (optional)

In addition to the ProAir line of lift, rotate and tilt tables featured in this brochure, Pentalift Equipment Corporation offers positioning solutions to suit unique applications. Contact a Pentalift Sales Representative for details. To view our specials capabilities use this internet link [www.pentalift.com/lift-tables/lift-tables.php](http://www.pentalift.com/lift-tables/lift-tables.php)

*"Our Primary Goal is to engineer and build the best products to ensure the ultimate in user safety and product reliability"*

*Paul Pedersen  
President  
Pentalift Equipment Corporation*

Individual Product Catalogs are available and can also be found on our website.  
Pentalift also manufacturers a complete line of loading dock equipment.

Note: Some photos may reflect products with optional features. All Pentalift Equipment Corporation products are subject to design improvement through modification without notice.

Pentalift Equipment Corporation  
P.O. Box 1060, Guelph, ON N1H 6N1 Canada P.O. Box 1510, Buffalo, NY 14240 – 1510 USA  
CP 1219 Pointe-Claire, QC Canada H9S 5K7  
Phone: (519) 763 3625 Fax: (519) 763 2894  
[www.pentalift.com](http://www.pentalift.com)

02140043 Printed in Canada



Engineered for Safety

## Pro Series Lift and Tilt Table

### DESCRIPTION:

An ergonomic design positions components within easy reach of the operator. By eliminating repetitive bending and reaching, cumulative trauma disorders are reduced and production efficiency is immediately increased.

Tilt up to 6,000 lbs with ease, efficiency and safety.



### As Standard All Units Include:

(2) Self-contained Hydraulic Power Units 1½ Hp  
208/3/60 or 230/3/60 or 460/3/60 or 575/3/60 w/  
TENV motor  
Reservoir is filled with oil  
Pre-wired NEMA 12 Motor Controls  
(2) Pre-wired NEMA 12 Push Buttons on 10 ft of  
straight cord (1) from each power unit  
Coil cord routing Tilter power supply to base of lift  
table  
Temporary Power Wires  
PentaFLOW bypass cylinder

Straight Toe Guards suitable for surface mounting  
Lagging Brackets on frame  
Backstop 12" high on tilter  
Scissor Legs are solid steel, one piece construction with  
precision reamed holes for accurate alignment & table  
operation  
Lubricated for Life, maintenance free bearings at pivot points  
Highly Visible, detailed safety & operation decals for  
greater visibility & safety  
Finish Coat of Enamel paint - standard Pentalift Gray color

# Specifications

## Pro-Series Lift & Tilt Tables

Model No	Capacity (lb)	Vertical Travel (in)	Tilt (deg)	Platform Size - Tilter W x L (in)			Frame Size W x L (in) Lower	Lift Time (sec) approx	Tilt Time (sec) approx	No of Cyl Lift/Tilt	Ship Weight (lb) ***
				Min **	Std	Max **					
PLT24302.5	2,500	24	30°	36 x 44	44 x 44	48 x 48	30 x 36	14	9	1/1	1,056
				36 x 48	50 x 50	50 x 54	30 x 36	14	9	1/1	1,156
36			45°	36 x 44	44 x 44	48 x 48	30 x 36	14	14	1/1	1,081
				36 x 48	50 x 50	50 x 54	30 x 36	14	14	1/1	1,181
		30°	36 x 48	44 x 48	48 x 48	30 x 48	24	9	1/1	1,169	
			36 x 48	50 x 50	50 x 54	30 x 48	24	9	1/1	1,269	
45°			36 x 48	44 x 48	48 x 48	30 x 48	24	14	1/1	1,194	
			36 x 48	50 x 50	50 x 54	30 x 48	24	14	1/1	1,294	
PLT24304*	4,000	24	30°	36 x 44	44 x 44	48 x 48	30 x 36	28	9	2/1	1,111
36 x 48				50 x 50	50 x 54	30 x 36	28	9	2/1	1,211	
36			45°	36 x 44	44 x 44	48 x 48	30 x 36	28	14	2/1	1,136
				36 x 48	50 x 50	50 x 54	30 x 36	28	14	2/1	1,236
		30°	36 x 48	44 x 48	48 x 48	30 x 48	49	9	2/1	1,224	
			36 x 48	50 x 50	50 x 54	30 x 48	49	9	2/1	1,324	
45°			36 x 48	44 x 48	48 x 48	30 x 48	49	14	2/1	1,249	
			36 x 48	50 x 50	50 x 54	30 x 48	49	14	2/1	1,349	
PLT24305*	5,000	24	30°	36 x 44	44 x 44	48 x 48	30 x 36	28	12	2/1	1,136
36 x 48				50 x 50	50 x 54	30 x 36	28	12	2/1	1,236	
PLT36305		36	30°	36 x 48	44 x 48	48 x 48	30 x 48	49	12	2/1	1,249
				36 x 48	50 x 50	50 x 54	30 x 48	49	12	2/1	1,349

Note: All models have a **14"** lowered height  
 \* Models **PLT24(30/45)4** & **PLT24305** available only with remote power unit (use applicable Deduct from Power Unit Options)  
 \*\* For non-standard Tilter platform sizes see Mechanical Options below  
 \*\*\* Shipping weight shown is for standard size tables (approximate)

## Options Include:

Special Height Backstop  
 Accordion bellows  
 Bevel Toe Guards

Hydraulic velocity fuse  
 Toe Sensor  
 Up travel limit switch  
 Guarded foot pedal control station

## PENTALIFT EQUIPMENT CORPORATION

P O Box 1510 Buffalo NY U.S.A. 14240-1510  
 P O Box 1060 Guelph ON Canada N1H 6N1

Phone (519) 763-3625  
 Fax (519) 763-2894

Website: [www.pentalift.com](http://www.pentalift.com)

Email: [lift@pentalift.com](mailto:lift@pentalift.com)



Engineered for Safety

## Pentalift DSL-Series Lift Tables

### Description:

Pentalift DSL-series double scissor lift tables are hydraulic, heavy-duty, lift tables with load capacities ranging from 2,500 to 6,000 lb. Travel heights of 43", 52", 60", 79" or 90" are available. DSL-series lift tables feature a 12" to 16" low height. Standard platform sizes range from 24" x 36" to 42" x 72" (optional to 54" x 84").

### Applications:

Pentalift DSL-series double scissor lift tables are suitable for higher lift applications, such as mezzanine access for storage or material transfer, where higher travel with a compact platform is required.



#### STANDARD FEATURES:

- Scissor legs are solid steel, one piece construction with precision reamed holes for accurate alignment and table operation
- Lubricated for life, maintenance-free bearing at pivot points
- PentaFLOW hydraulic bypass cylinders
- Remote hydraulic power unit
- 230-460-575/3/60 TEFC motor
- Pre-wired NEMA 12 motor control
- Pre-wired NEMA 12 push button control on 10' of straight cord
- Straight toe guards suitable for surface mounting
- Lagging brackets on frame
- Full width leg hinge pins
- Cross bracing between legs
- Top and bottom roller retainers
- Highly visible, detailed safety and operation decals for greater visibility and safety
- Table finished in Pentalift gray enamel

#### OPTIONS :

- Non-standard platform sizes
- Hydraulic power units up to 10 hp
- Accordion bellows
- Hydraulic velocity fuse
- Bevel toe guards
- Guarded foot pedal control
- Up travel limit switch
- Wall-mounted push button station
- Safety trip bars
- Sure stop valve

Consult a Pentalift Sales Representative for additional information or equipment recommendations

Note: Some photos may reflect products with optional features. All Pentalift Equipment products are subject to design improvement through modification without notice.

## PENTALIFT EQUIPMENT CORPORATION

P O Box 1510 Buffalo NY U.S.A. 14240-1510

P O Box 1060 Guelph ON Canada N1H 6N1

Website: [www.pentalift.com](http://www.pentalift.com)

Phone (519) 763-3625 Fax (519) 763-2894

Phone (519) 763-3625 Fax (519) 763-2894

Email: [lift@pentalift.com](mailto:lift@pentalift.com)



Product Bulletin 0214L030  
Printed in Canada





Engineered for Safety

## Pentalift QSL-Series Lift Tables

### Description:

Pentalift QSL-series quadruple scissor lift tables are heavy-duty, high lift, hydraulic tables with lift capacities from 2,500 to 6,000 lb. Travel height of up to 240" can be specified. QSL series tables feature a low height of either 28" or 36".

### Applications:

Pentalift QSL-series quadruple scissor lift tables are used in small footprint, high lift applications to access mezzanine for processing, storage and/or material transfer.



#### STANDARD FEATURES:

- Scissor legs are solid steel, one piece construction with precision reamed holes for accurate alignment and table operation
- Lubricated for life, maintenance-free bearing at pivot points
- PentaFLOW hydraulic bypass cylinders
- Remote hydraulic power unit
- 230-460-575/3/60 TEFC motor
- Pre-wired NEMA 12 motor control
- Pre-wired NEMA 12 push button control on 10' of straight cord
- High pressure hose (with double steel braid)
- Straight toe guards suitable for surface mounting
- Lagging brackets on frame
- Full width leg hinge pin
- Top and bottom roller retainers
- Cross bracing between legs
- Integral maintenance stand
- Highly visible, detailed safety and operation decals for greater visibility and safety
- Table finished in Pentalift gray enamel

#### OPTIONS :

- Non-standard platform sizes
- Hydraulic power units up to 10 hp
- Accordion bellows
- Hydraulic velocity fuse
- Bevel toe guards (shown)
- Guarded foot pedal control
- Up travel limit switch
- Wall-mounted push button station
- Safety trip bars
- Sure stop valve

Consult a Pentalift Sales Representative for additional information or equipment recommendations

Note: Some photos may reflect products with optional features. All Pentalift Equipment products are subject to design improvement through modification without notice.

## PENTALIFT EQUIPMENT CORPORATION

P O Box 1510 Buffalo NY U.S.A. 14240-1510

P O Box 1060 Guelph ON Canada N1H 6N1

Website: [www.pentalift.com](http://www.pentalift.com)

Phone (519) 763-3625 Fax (519) 763-2894

Phone (519) 763-3625 Fax (519) 763-2894

Email: [lift@pentalift.com](mailto:lift@pentalift.com)



Product Bulletin 0214L032  
Printed in Canada





Engineered for Safety

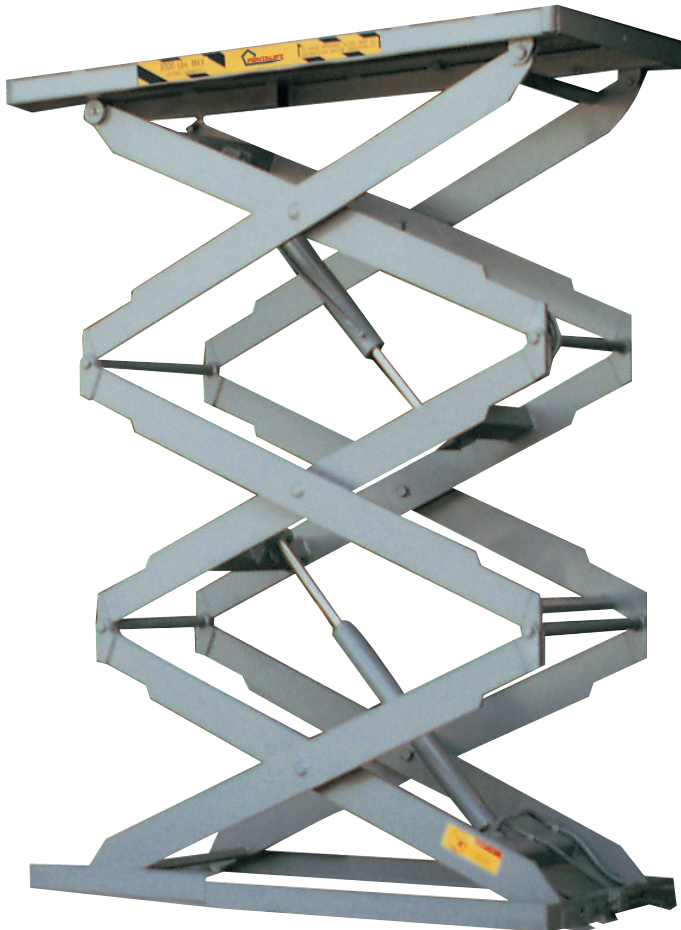
## Pentalift TSL-Series Lift Tables

### Description:

Pentalift TSL-Series Triple Scissor lift tables are heavy-duty, hydraulic tables with lift capacities of 2,500 to 6,000 lb. TSL-Series lift tables feature a low height of either 22" or 28". Standard platform sizes range from 36" x 48" to 48" x 72" (optional to 60" x 84"). Travel/lift up to 180" can be specified.

### Applications:

Pentalift TSL-Series Triple Scissor Lift Tables are used in small footprint, high lift applications to access mezzanines, for processing, storage and/or material transfer.



#### STANDARD FEATURES:

- Scissor legs are solid steel, one piece construction with precision reamed holes for accurate alignment and table operation
- Lubricated for life, maintenance-free bearings at pivot points
- PentaFLOW hydraulic bypass cylinders
- Remote hydraulic power unit
- 230-460-575/3/60 TEFC motor
- Pre-wired NEMA 12 motor control
- Pre-wired NEMA 12 push button control on 10' of straight cord
- High pressure hose (with double steel braid)
- Straight toe guards suitable for surface mounting
- Lagging brackets on frame
- Full width leg hinge pins
- Top and bottom roller retainers
- Cross bracing between legs
- Integral maintenance stand
- Highly visible, detailed safety and operation decals for greater visibility and safety
- Table finished in Pentalift gray enamel

#### OPTIONS :

- Non-standard platform sizes
- Hydraulic power units up to 10 hp
- Accordion bellows
- Hydraulic velocity fuse
- Bevel toe guards
- Guarded foot pedal control
- Up travel limit switch
- Wall-mounted push button station
- Safety trip bars
- Sure stop valve

Consult a Pentalift Sales Representative for additional information or equipment recommendations

Note: Some photos may reflect products with optional features. All Pentalift Equipment products are subject to design improvement through modification without notice.

## PENTALIFT EQUIPMENT CORPORATION

P O Box 1510 Buffalo NY U.S.A. 14240-1510

P O Box 1060 Guelph ON Canada N1H 6N1

Website: [www.pentalift.com](http://www.pentalift.com)

Phone (519) 763-3625 Fax (519) 763-2894

Phone (519) 763-3625 Fax (519) 763-2894

Email: [lift@pentalift.com](mailto:lift@pentalift.com)



Product Bulletin 0214L031  
Printed in Canada